

a.tron  
**NEXT**  
generation

## **NIMAK a.tronNEXT**

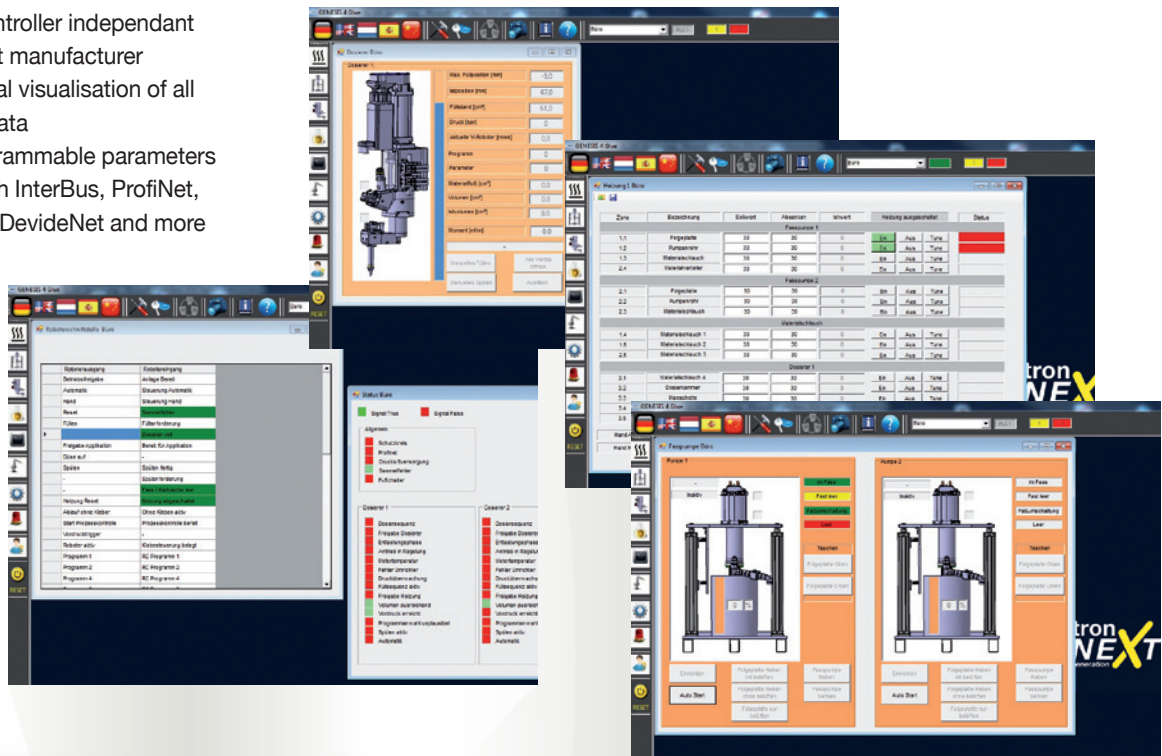
Dosing Technology for Adhesive and Sealing Applications

- Simplicity in Design
- Uniqueness in Functionality
- Champion in Performance

 **NIMAK**  
Die perfekte Verbindung

# Touch, Feel, Fun - NIMAK's powerful Control Panel

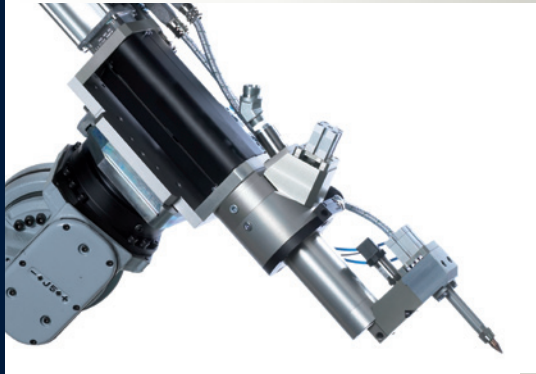
- Native controller independent from robot manufacturer
- Multilingual visualisation of all relevant data
- Free programmable parameters
- Works with InterBus, ProfiNet, EtherCat, DevideNet and more



# The a.tronNEXT sets benchmarks in Performance, Precision and Speed.

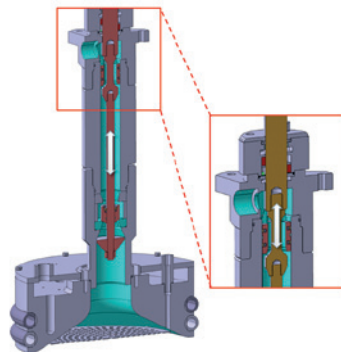
## The a.tronNEXT Doser:

- Material flow control using the FIFO principle
- Full heated up to nozzle
- Volumes 20/60/100/200/300 ccm
- All parts can be replaced without a change of TCP
- Self-referencing doser
- Fast switching valves
- Option: Integrated camera vision system for bead monitoring



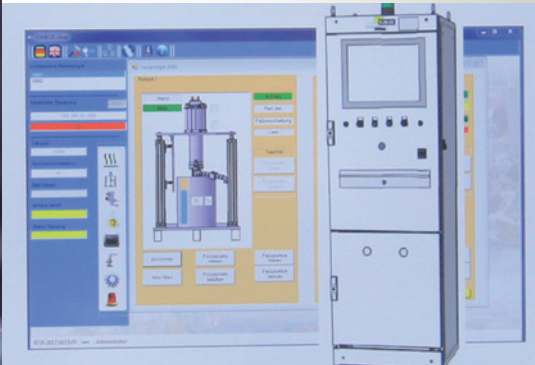
## The a.tronNEXT Barrel Pump:

- Robust mechanical structure
- Suitable for 30/50/200L adhesive barrel
- Single or double barrel pump
- Cold or fully heated pump
- High flow rate for fast doser filling
- Festo pneumatic actuators and valves



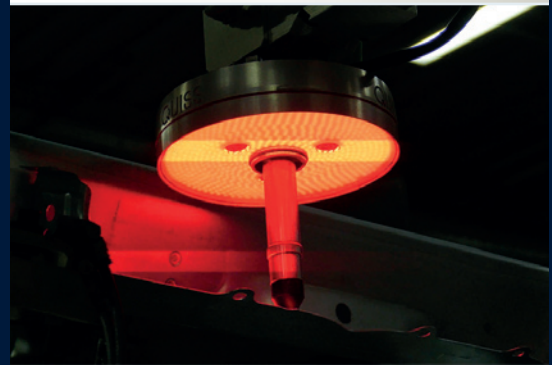
### The a.tronNEXT Universal Controller:

- PLC based controller
- Single control cabinet for pump and doser
- Operating via 17" touch panel
- User friendly HMI
- Precise volume controlled bead application
- Slim and less space consuming
- Option: Vision camera control integrated to NIMAK's universal controller



### Online Bead Monitoring:

- Completely integrated in a.tronNEXT dosing controller
- Continuous 100% quality control
- Comfortable interface between camera and dosing control
- Big cost reduction due to no separate control cabinet necessary for vision system
- Not only reveals poor bead quality but also depicts the parameter in which the error occurred



### Advantages of NIMAK System:

- Only one control cabinet for pump and doser
- Simple and powerful HMI
- Huge price advantage due to just 1 control cabinet
- Less space consuming due to just 1 control cabinet
- Same control cabinet for 1C and 2C glue systems
- Same control cabinet for 2 doser systems
- Self-referencing doser

# Your Advantages at a Glance



Less space required in plant due to single cabinet solution



Faster installation due to simple cable connections



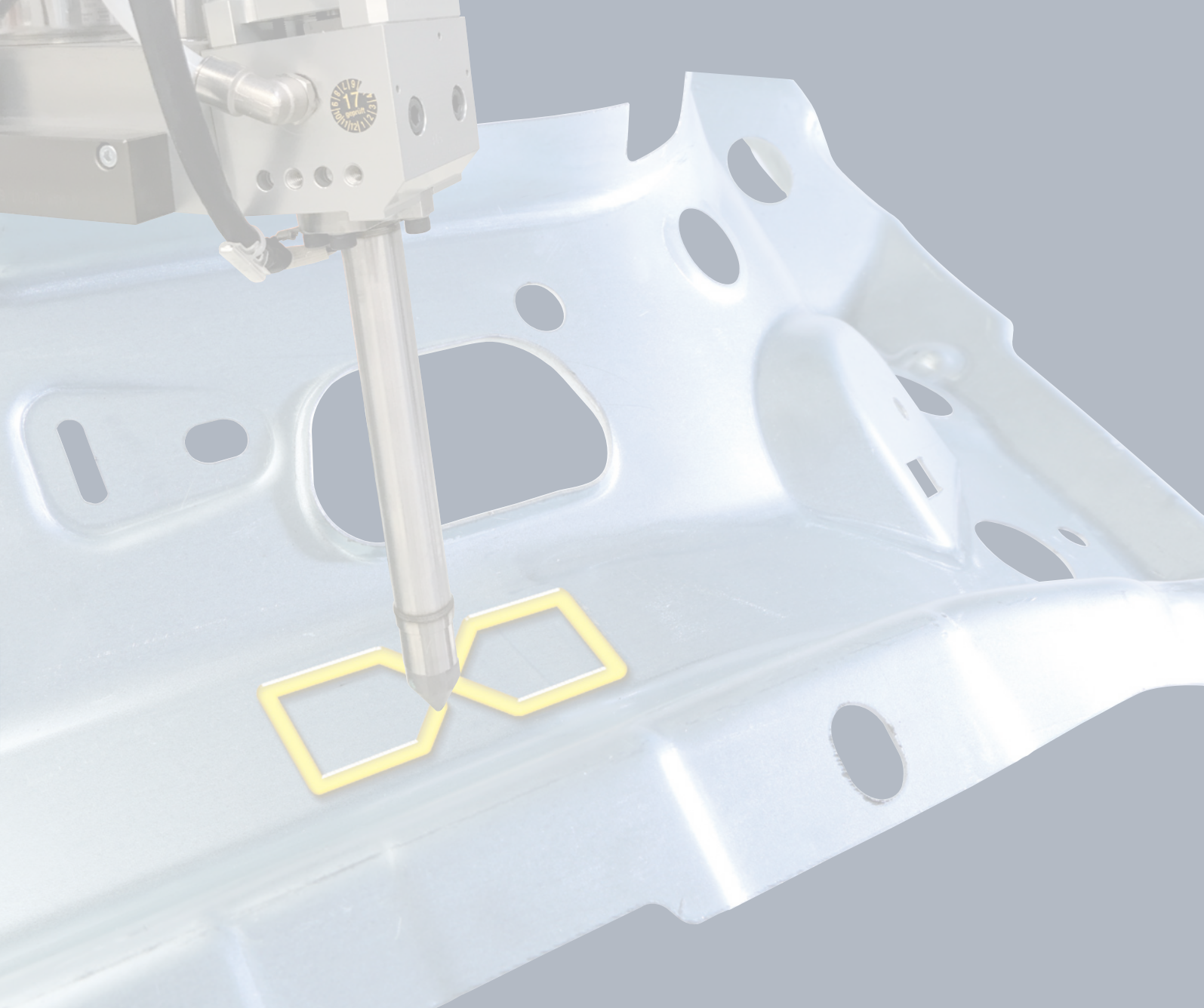
Easy and intuitive operation thanks to GENESIS glue software



High performance due to innovative hardware and software features



Less maintenance throughout the year makes the system more efficient



 **NIMAK**  
Die perfekte Verbindung

**NIMAK GmbH**  
Frankenthal 2  
57537 Wissen  
Germany

Phone +49 2742 7079-0  
Fax +49 2742 7079-151  
Mail [info@nimak.de](mailto:info@nimak.de)  
Web [www.nimak.de](http://www.nimak.de)

